



# TSB-QLM-Slot-Data-Adjustment



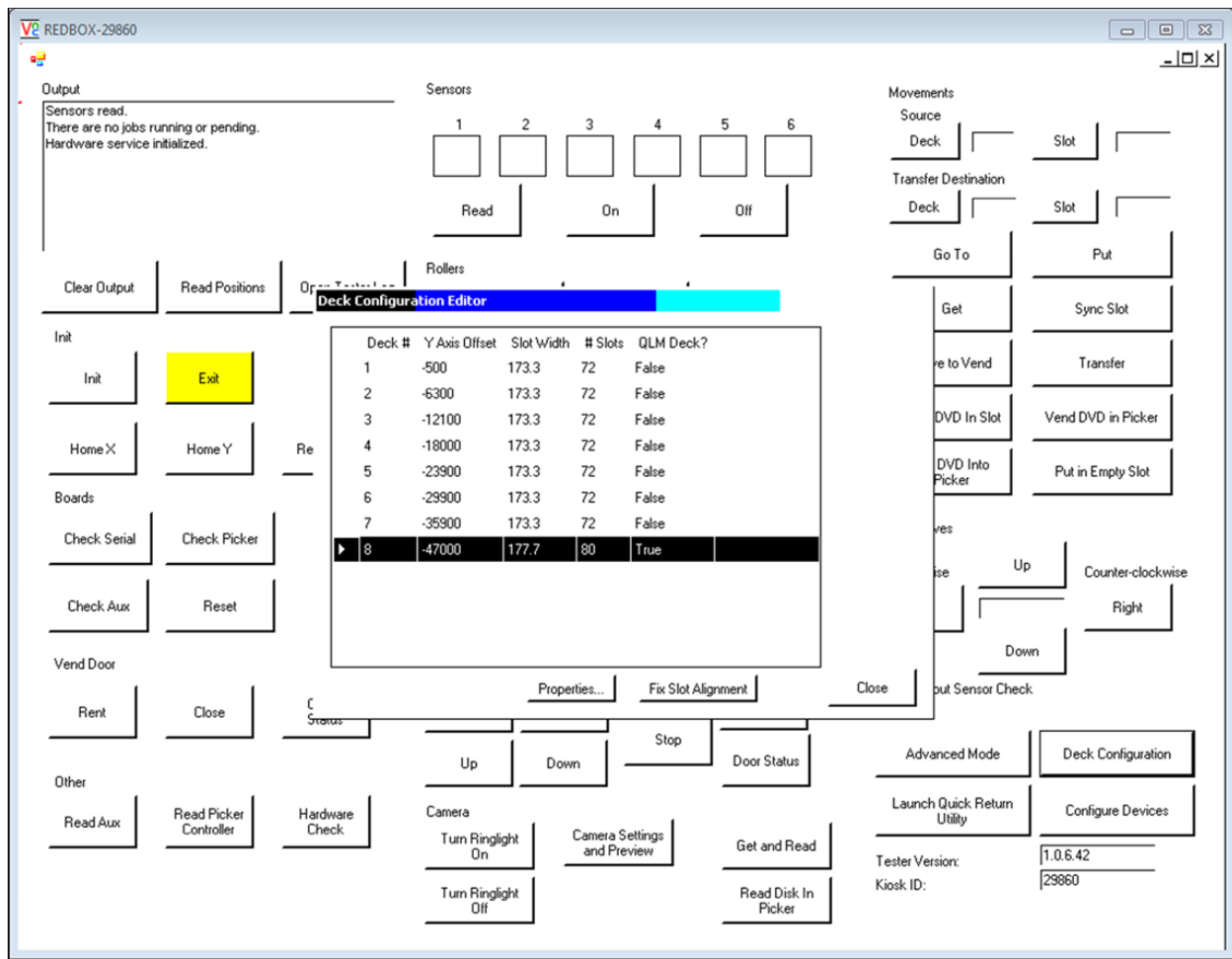
Sayali Kothari  
Contractor

## Slot Data Adjustment (QLM)

**Date Issued:** 3/3/2012

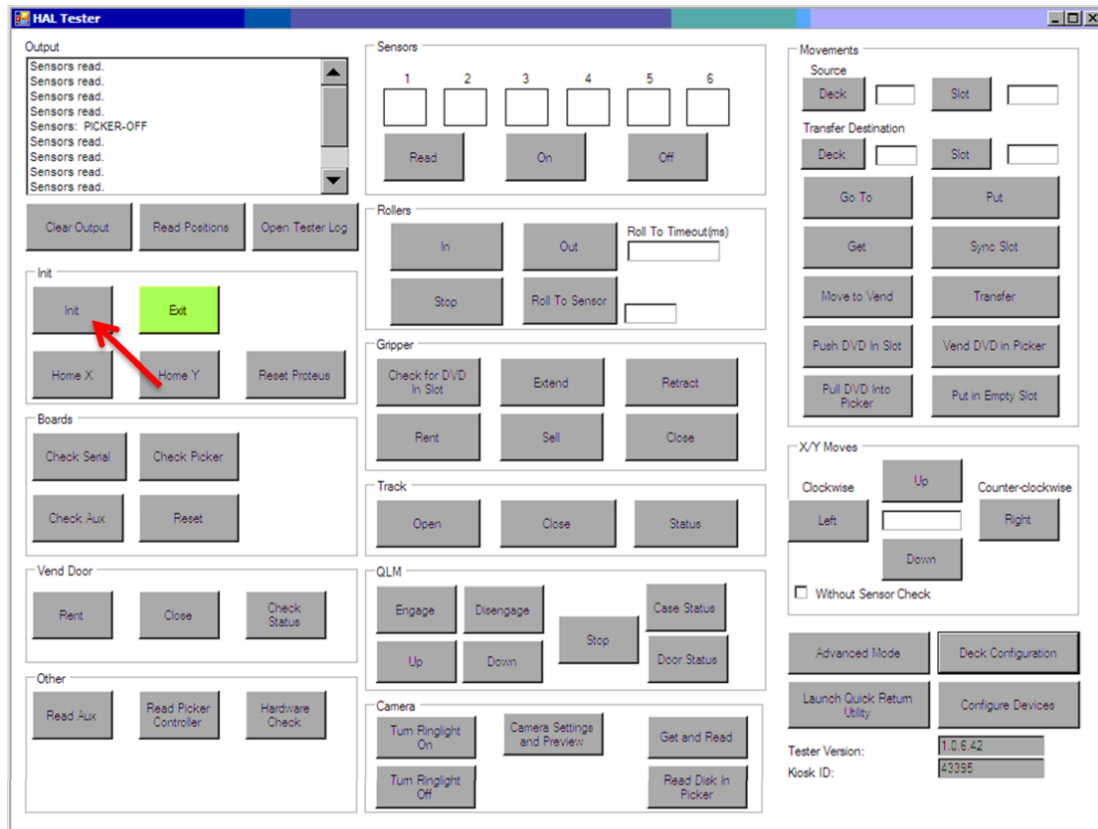
**Date Updated:** 3/3/2012

**Description:** This TSB will explain how to adjust slot data on the QLM.



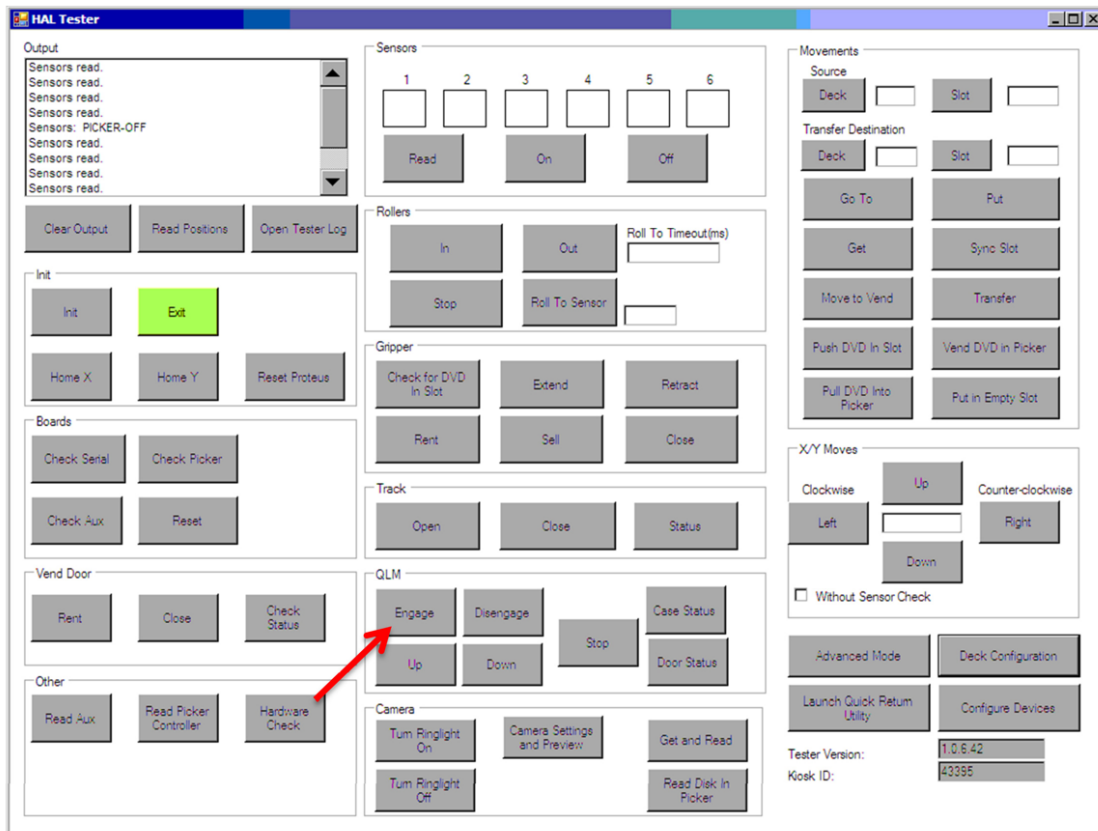
## 1. Perform an Initialization

If you suspect that the slot data may be off on the kiosk, always perform an initialization before adjusting. Running an initialization homes both the X and Y axis and may resolve temporary issues.



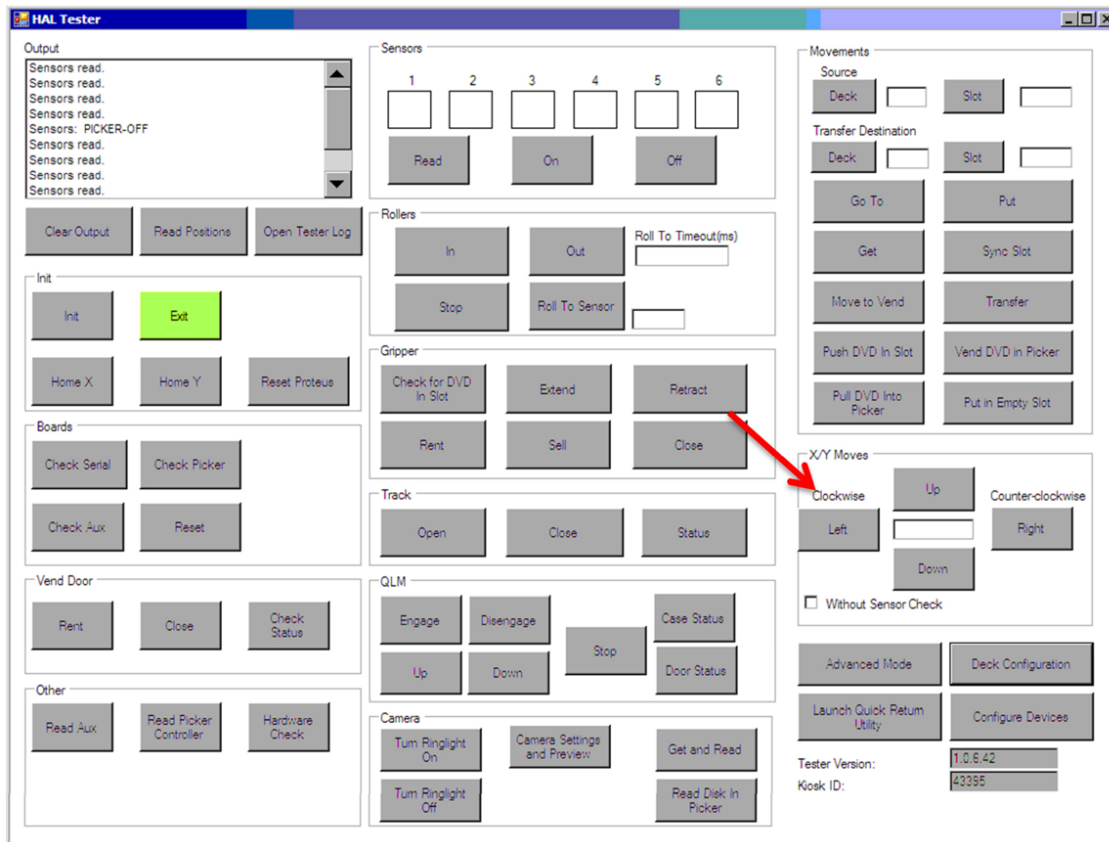
## 2. Engage the QLM

After you have ran the Initialization you will need to engage the QLM to check the slot data.



### 3. Checking How far to adjust it.

First move the picker to Deck 8 Slot 1 for the first quadrant. See how far it is off and move the drum using the X/Y movements shown below. They should have the same distance on either side of the gripper fingers in between the walls of the slot. Once you figure out how far it is off move on to the next step.



#### 4.Opening the Configuration Tool.

To open the configuration tool you will need to select Deck Configuration (shown by the Green Arrow). Then click on Deck 8 and select Properties at the bottom of the Deck Configuration Editor window (shown by the Red Arrow).

## **5. Adjusting the Slot Data.**

Once you have opened the properties for Deck 8 you will need to double click on the offset of the quadrant you are adjusting and change it according to how far it was off from Step 3. Increasing the Offset will move the alignment counter clock wise. To save the adjustments just click OK on the Edit Deck Configuration window. Once you have made the adjustments test it out by moving the picker to Deck 8 Slot 1 again and see if it is correct.

**6. Checking the rest of the Quadrants.**

Unlike the Drum with the QLM you need to adjust all the Quadrants for your slot data to be correct. It's best to check all 4 to see if they are off before adjusting them. You can acquire the starting slot of each Quadrant by looking at the properties of deck 8.

**7. Repeat steps 3-5 for all quadrants that require adjustment.**

<b><u>Tools/Parts Needed:</u></b>	<b><u>Quantity:</u></b>	<b><u>Parts Catalog</u></b>
-----------------------------------	-------------------------	-----------------------------

		<b><u>Number:</u></b>
Keyboard	1	

***Associated TSB's:***

◀		▶
---	--	---

<b><u>Owner:</u></b>		<b><u>Department:</u></b>
Created by: Lee Erickson		Machine Support
Published by: Steve Demunster		Machine Support
<b><u>Revision #:</u></b>	<b><u>Date:</u></b>	<b><u>Description:</u></b>
1.0.0	3/3/2012	Original Release

Report Out-of-Date Content



